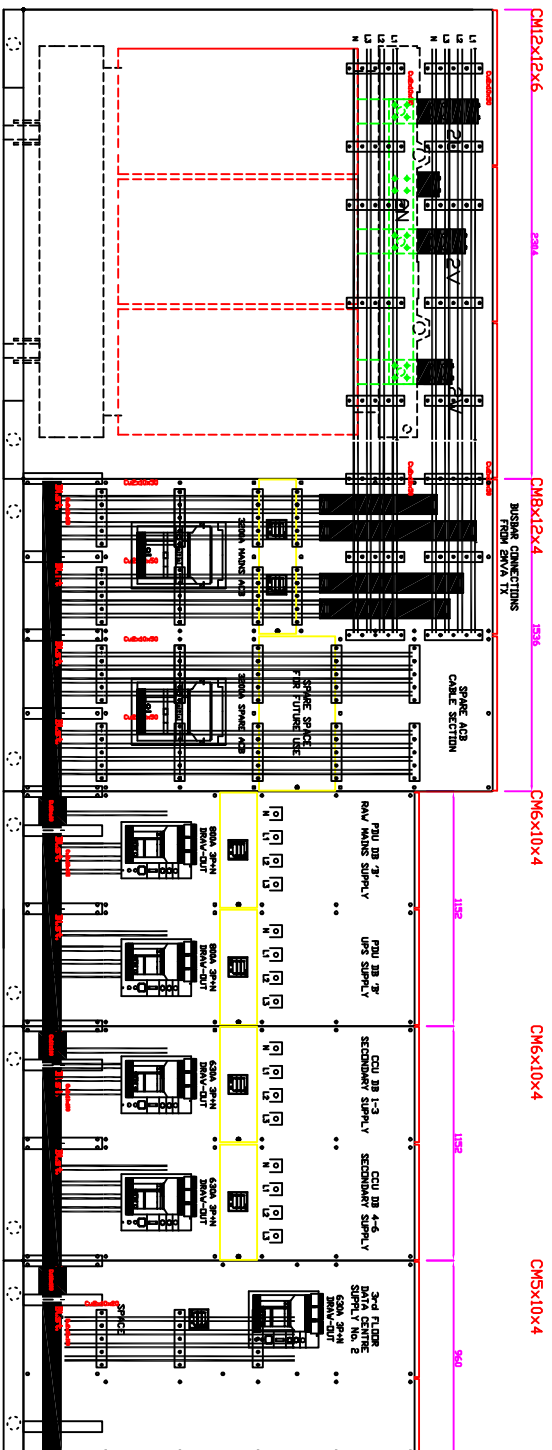
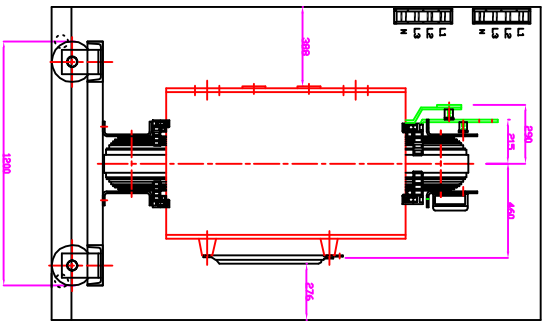


K4400BL-02
 BT TELEPHONE HOUSE
 6th FLOOR DATA CENTER
 HV/LV PACKAGE SUB-STATION 'B'
 FRONT VIEW - COPPER LAYOUT



<p>THIS DESIGN IS THE PROPERTY OF KANE ENGINEERING LIMITED AND MUST NOT BE LENT OR COPIED WITHOUT THE PERMISSION OF KANE ENGINEERING LIMITED</p>		<p>KANE ENGINEERING LIMITED GLENFORD ROAD, NEWTOWNARDS, CO. DUBLIN NORTHERN IRELAND BT33 4AU TEL: 028 9181 4465 FAX: 028 9181 8900</p>	
<p>COLLOUR: RAL 7035 IP: 4.3 FORM: 4 TYPE 7 ACCESS: FRONT/REAR VOLTAGE: 11kV-400V</p>	<p>POLES: 4 POLE MAIN BUSBAR: 3200A IPK: 500A</p>	<p>DESIGNED BY: DK CHECKED BY: JT DATE CHECKED: 07.01.08 DATE DRAWN: 2 OF 3 SCALE: N.T.S. ISSUE: 1</p>	<p>JOB No: K4400B DRG. No: K4400BL-02 BT TELEPHONE HOUSE 6th FLOOR DATA CENTER PACKAGE SUB-STATION 'B' SWITCHGEAR LAYOUT 2</p>
<p>MOD. BY: _____ DATE: _____</p>	<p>MODIFICATION DESCRIPTION: _____</p>	<p>CHECKED BY: _____ DATE: _____</p>	<p>DATE: _____</p>

